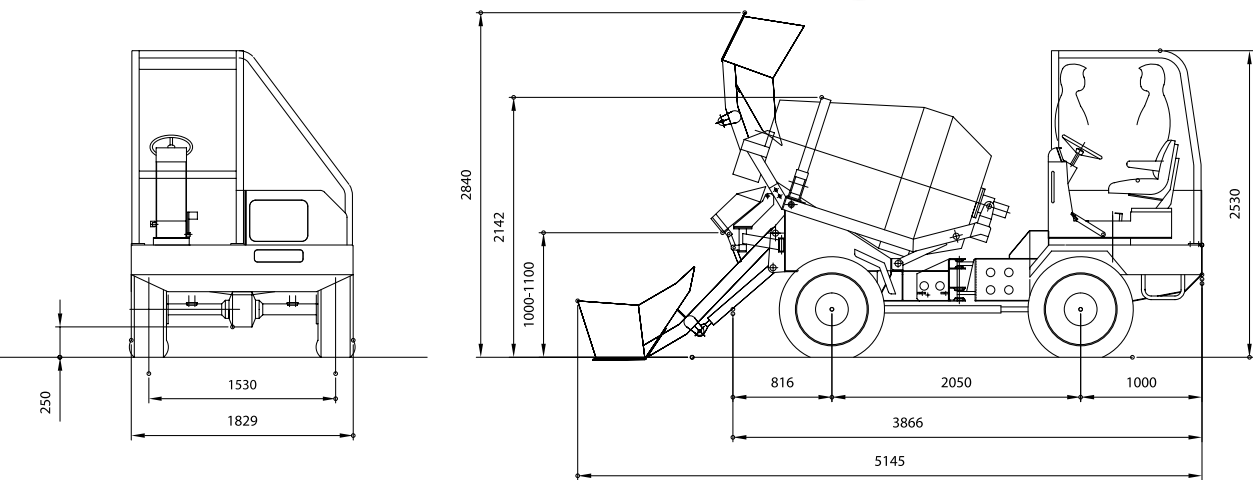




CARMIX ONE articulated



Organizzazione con Sistema di Gestione certificato
Company with Management System certified
ISO 9001:2000
SINCERT



Metalgalante, the Company that invented and developed CARMIX, the No. 1 in the 4x4 Self-Loading Concrete Mixer. Thanks to 40 years of experience, CARMIX represents world-wide the Ideal Solution to produce high-quality cost-effective concrete wherever and whenever needed. From our Venice based factory, thousands of CARMIX have reached our Customers to over 130 countries matching their utmost expectations.



30020 Noventa di Piave (Venice) Italy
Tel.+39.042165191 - Fax +39.0421658838
info@carmix.com
Skype: carmix.main

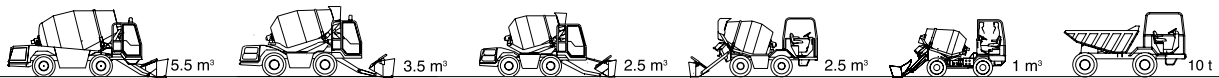


CARMIX ONE Articulated

THE IDEAL SOLUTION WHERE SMALL
QUANTITY OF CONCRETE IS REQUIRED



carmix.com





CARMIX ONE articulated



CARMIX ONE articulated

MIXING UNIT: Drum Capacity 1400 liters. Real concrete output: 1 m³ per batch. Double mixing screws. Cover for emergency unloading. Drum rotation by hydraulic motor and planetary reducers. Mixing and discharging speed independent from r.p.m. of diesel engine. Quick discharge by drum tilting.

ENGINE: Diesel Cummins, A1700 water-cooled, 3 cylinders. Power 28 kW. (37 HP) set at 2800 r.p.m. Electric starter.

TRANSMISSION: Hydrostatic. A variable outlet pump drives the hydraulic two speed motor connected to the differential through the two speed reducers. 4 wheel driving.

SPEED: Working speed from 0 to 7 km/h, road transfer from 0 to 14 km/h. Electric servo control.

DRIVING SEAT: Reversible seat with automatic inversion of hydraulic steering circuit. ROPS-FOPS Canopy.

CHASSIS: Articulated steel profile specially engineered for off-road operations.

HYDRAULIC SYSTEM: 3 circuits. Variable outlet pumps for hydrostatic transmission and drum rotation. Gear pumps for services and steering. Heat exchanger type water/oil-air.

LOADING SHOVEL: Capacity 180 liters.

CHUTE: Slewing and manual tilting.

WATER SYSTEM: Self-contained. Hydraulic driven water pump. Water meter.

GRADIENT: Fully loaded 30%

BRAKES: Disc brakes. Twin independent circuit for parking and emergency. Mechanical parking brake acting on rear axle.

TYRES: Off road industrial type 11,5/80 - 15,3 PR 10.

STEERING: Hydrostatic. Radius: internal mm 2700, external mm 4600.

ELECTRIC SYSTEM: 12 Volt. 80 Ah battery.

TANKS: Water: 310 liters. Diesel: 35 liters. Hydraulic oil: 25 liters.

WEIGHT: Kg. 2800 in running order.

CATALOGUES: The machine is equipped with use and maintenance and spare parts manuals, according to CE regulations.

graphic CARMIX - studio clipart 0021480750

As result of our policy of continuously developing and improving our product range, all specifications may change without notice.

EASY CONCRETE ANYWHERE

- Ideal for rentals
- Compact and economic
- High productivity (up to 5m³/h)
- Low maintenance cost
- Articulated and 4x4

